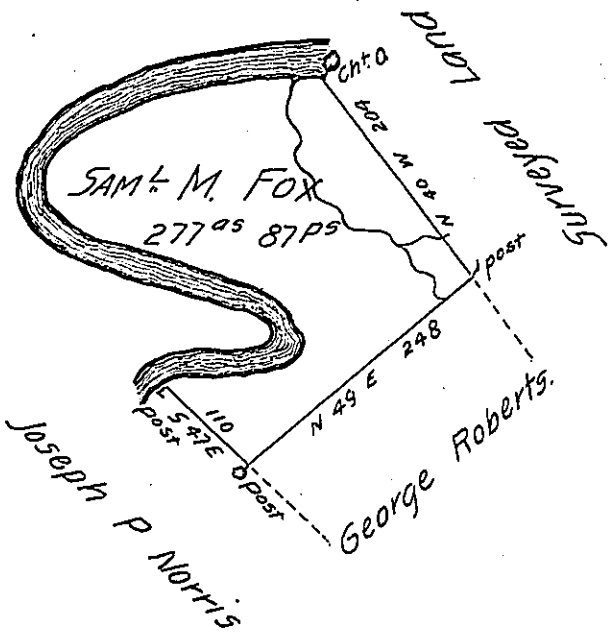


The Courses and Distances Down
the River are as follow

- N 83 E 100
- N 46 E 22
- N 5 W 22
- N 49 W 24
- N 71 W 194
- N 54 W 32
- N 9 E 27
- N 57 E 75
- N 81 E 186
- 682



Situate on the South Side of the West Branch of - Susquehanna
River about two and a half Miles below Sandy Lick - including a Small
(Deer) Lick in Alleganey Township Huntingdon County containing two
hundred and Seventy seven acres and Eighty seven perches and
the Usual Allowance for Roads.

Surveyed the 13th Day of July 1795 for Samul M. Fox in pur-
suance of a Warrant dated the 24th Day of January 1793.

John Canan D.S.

Daniel Brodhead Esq^r S.G.

IN TESTIMONY that the above is a copy of the original remaining on file in
the Department of Internal Affairs of Pennsylvania, made
conformably to an Act of Assembly approved the 16th day of
February, 1833, I have hereunto set my Hand and caused
the Seal of said Department to be affixed at Harrisburg,
this fourteenth day of September 1904

Isaac B. Brown
Secretary of Internal Affairs.